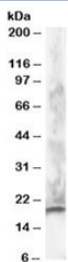


CABP1 Antibody [L- and S- isoforms] (R34113)

Catalog No.	Formulation	Size
R34113-100UG	0.5 mg/ml in 1X TBS, pH7.3, with 0.5% BSA (US sourced) and 0.02% sodium azide	100 ug

[Bulk quote request](#)

Availability	1-3 business days
Species Reactivity	Human
Format	Antigen affinity purified
Host	Goat
Clonality	Polyclonal (goat origin)
Isotype	Goat Ig
Purity	Antigen affinity
Gene ID	9478
Applications	Western Blot : 0.5-2ug/ml ELISA (peptide) LOD : 1:32000
Limitations	This CABP1 antibody is available for research use only.



Western blot testing of human brain lysate with CABP1 antibody at 1ug/ml. Predicted molecular weight: ~26/19kDa (L/S isoforms), observed here at ~19kDa.

Description

Additional name(s) for this target protein: Calcium binding protein 1, calbrain

Application Notes

Optimal dilution of the CABP1 antibody should be determined by the researcher.

Immunogen

Amino acids GNCVKYPLRNLS were used as the immunogen for this CABP1 antibody. This sequence is specific to the L (227 AA) and S (167 AA) isoforms.

Storage

Aliquot and store the CABP1 antibody at -20oC.